



University of California Cooperative Extension:
El Dorado and Amador Counties
FOOTHILL VINEYARD NEWS



A newsletter produced for foothill wine grape growers and the grape industry by your local
UC Cooperative Extension Farm Advisor, Lynn Wunderlich

ISSUE #4

OCTOBER, 2009

UC ANR, the Division of Agriculture and Natural Resources of which Cooperative Extension is a part, has recently announced some major restructuring to achieve \$9 million in permanent budget cuts, the largest in UC history, caused by the reduction in state funding. The Center for Water Resources, the Small Farms Program and other statewide programs are being closed; while others, such as UC IPM, are taking a 20% funding cut. Farm Advisors are being asked to take furlough days to accompany our pay cut, but we will not be laid off as a result of the restructuring. Vice President Dan Dooley announced the cuts within the context of the 2025 Strategic Vision, a document compiled to anticipate what Californians will need from UC and Cooperative Extension in the next 15 years.

What does this project for California agriculture? The picture isn't very pretty. The Strategic Vision anticipates California will have **8.5 million more** residents by 2025, giving our state a population of 46.7 million. This projected increase in urban residents means prime farm land will continue to be lost to development, and farm yields will need to increase and farming systems will need to become more efficient for ag. to remain competitive. The increase in population will also mean an increase in urban demand for water, and water quantity and quality will continue to be major agricultural issues. Climate change will produce weather extremes and changes in the pattern of precipitation. These environmental changes, along with growing global commerce, will increase the impacts of new invasive pests and diseases. Air quality will emerge as a major issue, and ag. practices will be more and more regulated due to these and other environmental concerns. Access to a stable labor force will continue to be uncertain, pending resolution of immigration policy issues. And the list goes on...

In order to address some of these major issues in the face of unprecedented budget cuts, UC ANR is refocusing its limited resources on *strategic initiatives* that are meant to bring together teams of UC researchers and extension professionals. Five initiatives are currently being proposed: Sustainable Food Systems; Endemic and Invasive Pests and Diseases; Sustainable Natural Ecosystems; Water Quality, Quantity, and Security; and Healthy Families and Communities. The Vision, while predicting major challenges, also predicts a growing partnership between the University of California, UCCE, and the people of California in order to solve these challenges.

That's quite a plateful of problems to solve! Locally, I hope to continue to work with all of you to conduct relevant research to address your farming needs and increase your ability to farm sustainably; and to bring UC expertise to your doorstep whenever possible.

Lynn Wunderlich
UCCE Farm Advisor, El Dorado and Amador Counties

IN THIS ISSUE:

- **GRAPE GROWER NEEDS ASSESSMENT RESULTS.**
- **SUMMARY OF CIMIS DATA: ET0 AND PRECIPITATION 2006-2009.**
- **SAVE THE DATE: UPCOMING UC COURSES.**
- **ANNOUNCING WINTER EVENING GRAPE MEETING SERIES BEGINNING MONDAY, DEC. 7 AT 6 P.M.! THE ROOTS OF FINE WINE!**

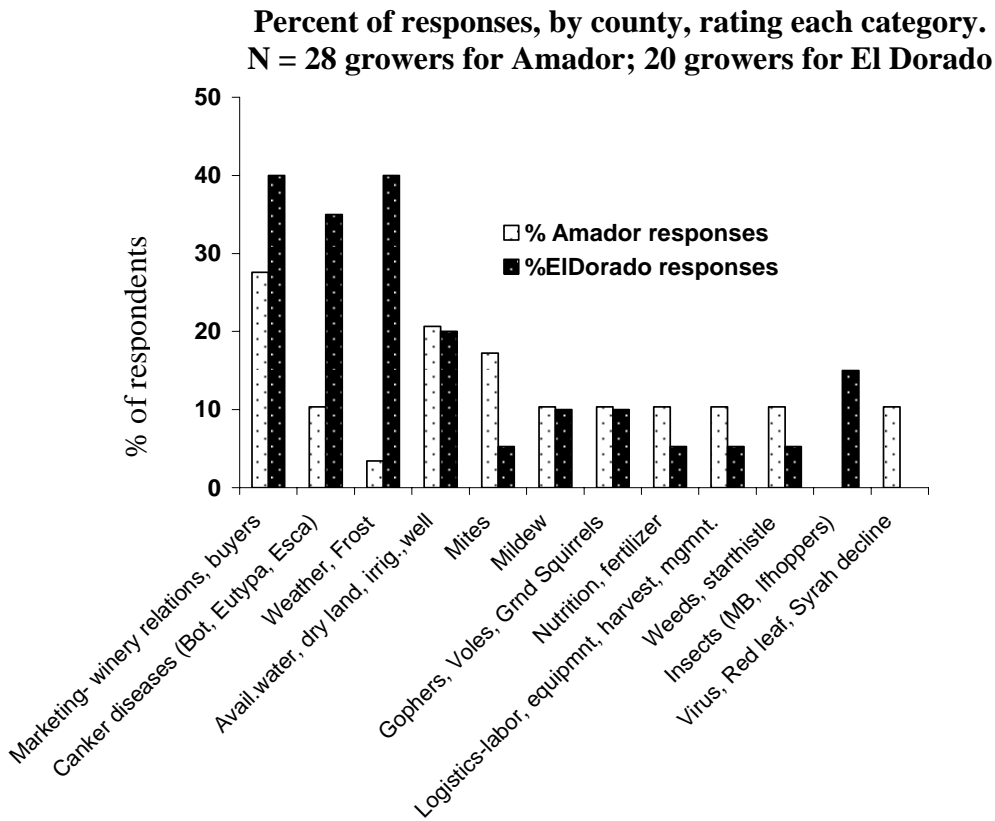
GRAPE GROWER NEEDS ASSESSMENT SURVEY RESULTS. When I took on the duties of Viticulture Advisor in spring of 2007 I began to call and meet as many growers as I could contact in order to introduce myself to you, learn a little about your farming practices, and find out what sort of information you were looking for from me and UCCE. I contacted about 75 growers in Amador and El Dorado counties, and I was able to conduct face to face interviews with 27 growers in Amador county and 20 growers in El Dorado county. One Amador grower (just 1!) filled out my survey which was posted on my website and returned it to me that way. So, from a total of 48 survey responses, here is what you all had to say about growing grapes in the foothills.

| Number of survey respondents and gender | | Ave. # of acres farmed (Median acreage farmed) | | Number of years farming experience | | Percent of respondents that use the internet. | |
|-----------------------------------------|---------------------|------------------------------------------------|---------------|----------------------------------------------------------------|---------------------------------------------------------------|-----------------------------------------------|-----------|
| Amador | El Dorado | Amador | El Dorado | Amador | El Dorado | Amador | El Dorado |
| 28: M: 25 F: 3 | 20 M: 17 F: 3 | 62 acres (20) | 32 acres (13) | 0-5 years: 3 6-10 years:4 11-20 years: 7 >20years: 14 | 0-5 years: 2 6-10 years:5 11-20 years: 4 >20years: 9 | 61% | 85% |

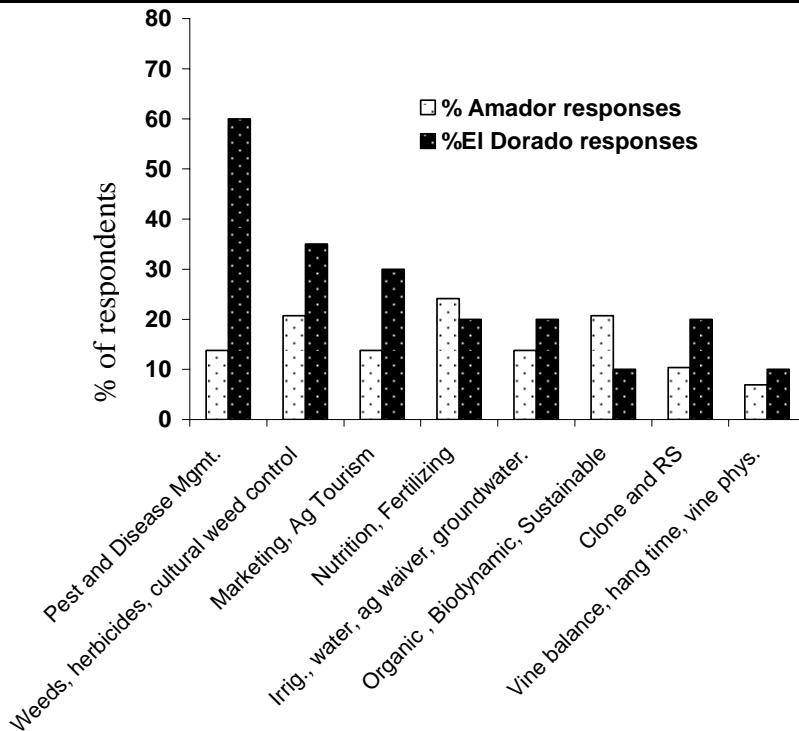
| Top 5 grape varieties farmed by respondents* | | Top 5 rootstocks used by respondents | |
|----------------------------------------------------------------------------|-----------------------------------------------------------------------------------|------------------------------------------------------------------|---------------------------------------------------------------------------------------|
| Amador | El Dorado | Amador | El Dorado |
| 1. Zinfandel 2. Barbera 3. Syrah 4. Petite Sirah 5. Sangiovese | 1. Zinfandel 2. Syrah 3. Cabernet Sauvignon 4. Merlot 5. Petite Sirah | 1. 110R 2. own root 3. St. George 4. 1103P 5. 101-14 | 1. own root 2. 110R 3. 3309 and 101-14 (tied) 5. 1103P and Freedom (tied) |

*Respondents mentioned farming a total of 52 different varieties.

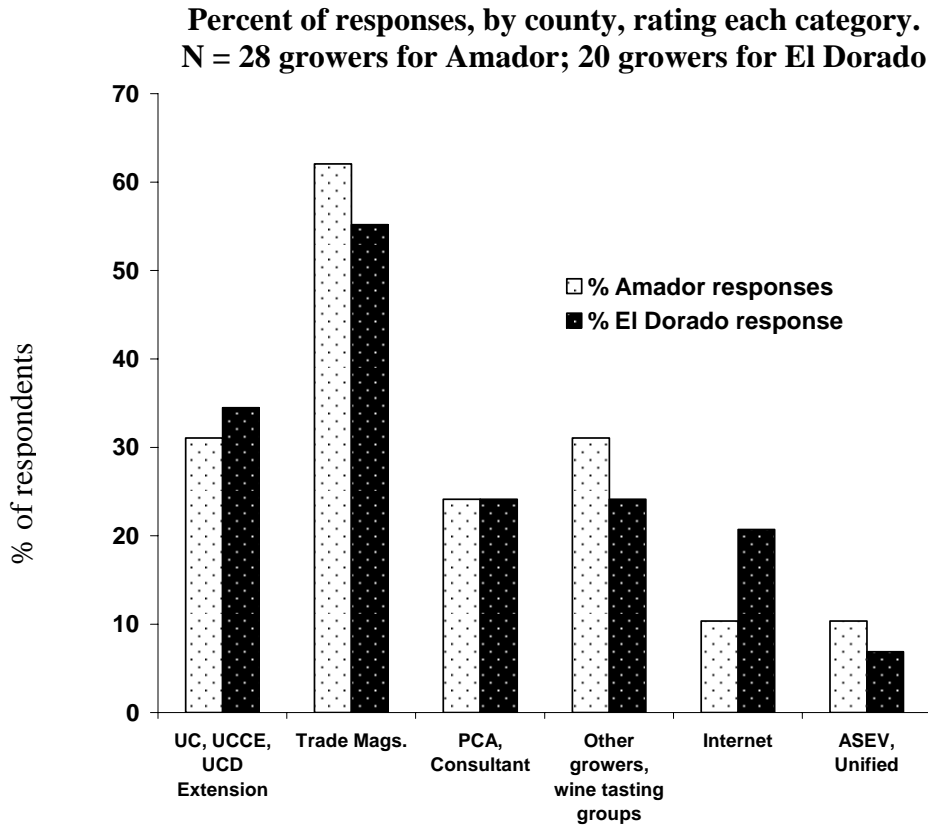
Survey question: What are your main problems/difficulties?



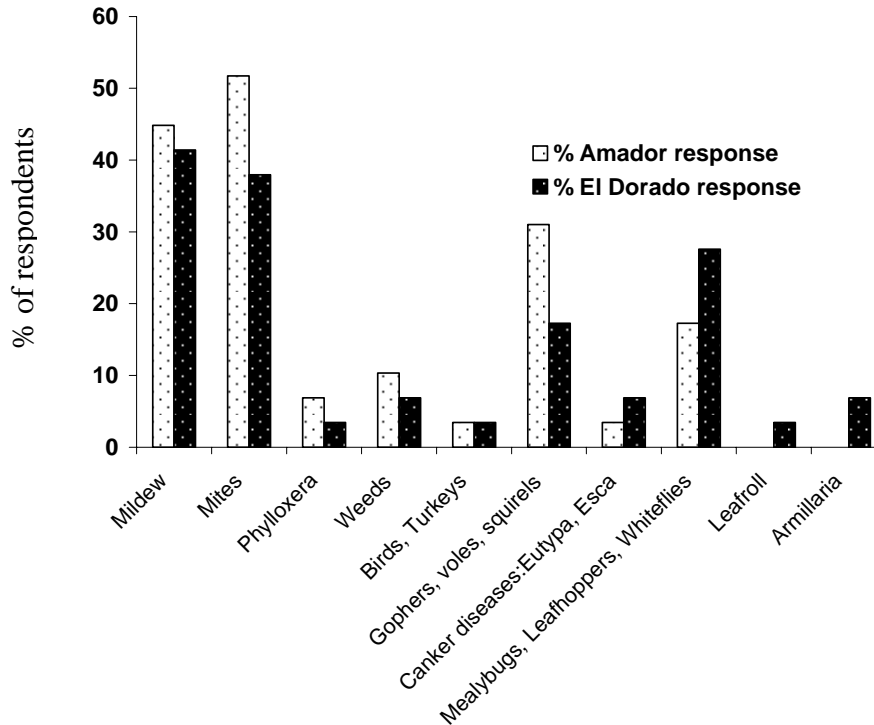
Survey question: What issues are you seeking more information on?



Survey question: What sources do you use for grape growing information?

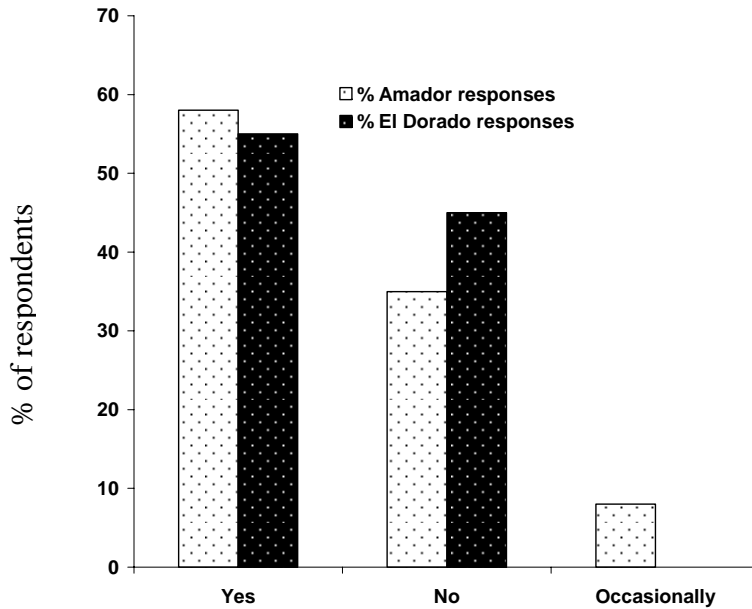


Survey question: What are your key pests?

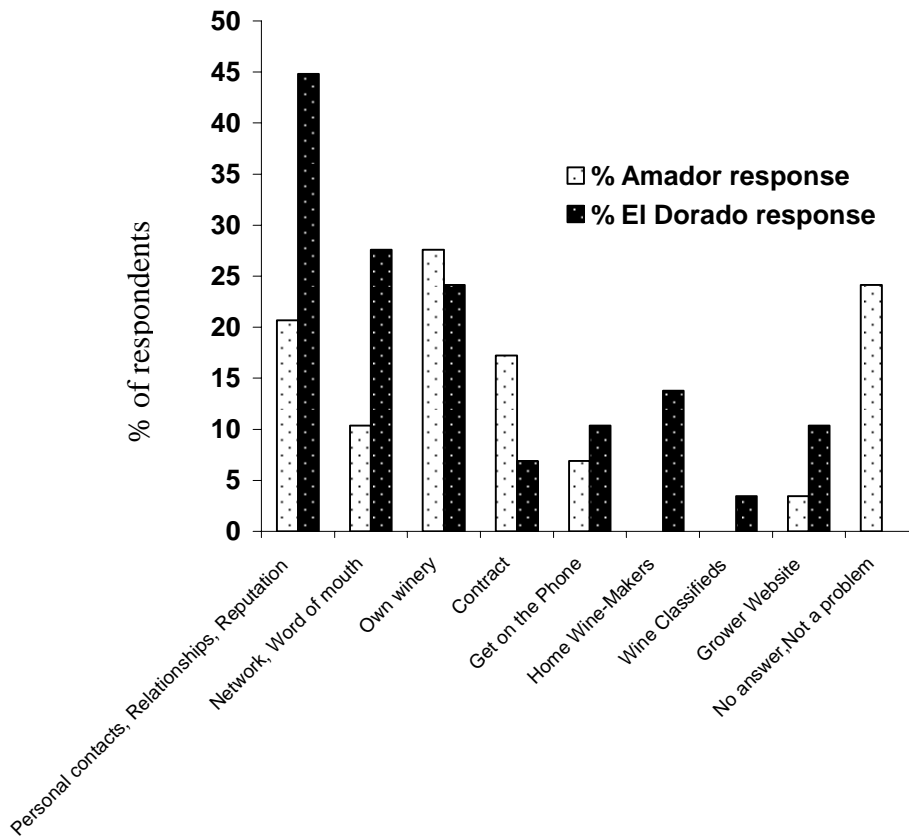


Survey question: Do you use a PCA (Pest Control Advisor)?

**Percent of responses, by county, rating each category.
 N = 28 growers for Amador; 20 growers for El Dorado**



Survey question: How do you market your grapes?



"CURRENT ISSUES IN VINEYARD HEALTH" November 19, 2009

On this year's program: Dr. Andy Walker., Department of Viticulture and Enology, UC Davis, will lecture on "Breeding Grapevines for Pierce's Disease Resistance"; Steve Vasquez, UCCE Viticulture Advisor, University of California Cooperative Extension, Fresno county, will present the practical information on controlling grape fungal disease such as powdery mildew and Botrytis bunch rot diseases; and Richard Hoenisch, Western Plant Diagnostic Network, Department of Plant Pathology, UC Davis, will talk about how grape growers can play an important role in the management of exotic pests and diseases.

In the face of what may be an epidemic wave of leafroll spread, three lectures will provide up to date information about this important issue: Dr. Kent Daane, UC Berkeley and Monica Cooper, UCCE, Napa County, will discuss the biology of mealybugs in California and their control; Rhonda Smith, UCCE Sonoma County will discuss the dangers of spreading mealybugs in Pumice; and Dr. Deborah Golino, CE Plant Pathology Specialist, UC Davis, will explain why this disease is so important to grape growers today and what they can do to reduce its damage in vineyards..

When: Nov. 19: Thursday, 9 a.m.-4 p.m.

Where: Da Vinci Building, 1632 Da Vinci Ct, Davis, CA

5.5 PCA units approved

Fee: \$190.00 Includes course materials and lunch.

Section:

To Register: Contact UC Davis Extension

<http://extension.ucdavis.edu/unit/winemaking/>

(800) 752-0881

Save the date for these other upcoming courses and symposia. Register and get information at: www.extension.ucdavis.edu/wine

2/18/10: Wine and Grape Research 2010

2/23/10-2/25/10: Varietal Winegrape Production Short course, UC Davis Extension

5/6/10: Varietal Focus: Sauvignon Blanc

Ah, winter. Time to put your feet up, sip some fine foothill wine and catch up on all that good UC research information you've missed while you've been toiling in the vineyard!!

Announcing the Winter Evening Grape Seminar Series: "Popcorn and a Movie" (well, sort of a movie!) We will view some of the videotaped seminars from recent UC meetings. These are quality presentations with powerpoint AND the speaker audio/visual, and it is free! I'll provide the popcorn.

Monday, December 7, 6 p.m.- 9 p.m., Ag. conference room UCCE El Dorado, 311 Fair Lane.:

The Roots of Fine Wine

Lectures from the Recent Advances in Viticulture and Enology Seminar:

- **The Complex Three Dimensional Distributions of Grapevine Roots**
 - **Root Dynamics in Grape**
 - **Winegrapes Cover Crops Competition for Water**

CIMIS data: compiled from the Camino station near Placerville.

Precipitation Totals for 2003 to October 27, 2009

| Month | 03-04 Inches | 04-05 Inches | 05-06 Inches | 06-07 Inches | 07-08 Inches | 08-09 Inches | 09-10 Inches |
|---------------|-----------------|-----------------|-----------------|-----------------|-----------------|-----------------|-----------------|
| July | 0.00 | 0.00 | 0.00 | 0.00 | 0.00 | 0.00 | 0.00 |
| August | 0.35 | 0.00 | 0.04 | 0.00 | 0.00 | 0.00 | 0.00 |
| September | 0.04 | 0.83 | 0.63 | 0.00 | 0.71 | 0.00 | 0.2 |
| October | 0.04 | 6.61 | 0.75 | 0.67 | 2.20 | 0.87 | 2.28 |
| November | 0.83 | 4.49 | 2.72 | 3.43 | 1.26 | 1.57 | |
| December | 8.86 | 0.00 | 20.63 | 6.73 | 6.50 | 4.84 | |
| January | 4.21 | 0.28 | 7.20 | 2.09 | 8.46 | 4.09 | |
| February | 8.58 | 0.59 | 5.31 | 9.92 | 4.53 | 9.09 | |
| March | 1.77 | 1.03 | 14.21 | 1.77 | 1.02 | 5.79 | |
| April | 0.55 | 1.23 | 11.61 | 3.15 | 0.31 | 2.13 | |
| May | 0.16 | 4.65 | 1.18 | 0.75 | 0.00 | 4.33 | |
| June | 0.04 | 2.28 | 0.00 | 0.04 | 0.00 | 0.04 | |
| Totals | 25.43 | 21.99 | 64.28 | 28.55 | 24.99 | 32.75 | |
| Average | 3.91 | 3.38 | 9.89 | 4.39 | 3.84 | 5.04 | |

ETo Totals for 2003 to October 27, 2009

| Month | 03-04 Inches | 04-05 Inches | 05-06 Inches | 06-07 Inches | 07-08 Inches | 08-09 Inches | 09-10 Inches |
|---------------|-----------------|-----------------|-----------------|-----------------|-----------------|-----------------|-----------------|
| July | 8.99 | 8.98 | 8.84 | 8.77 | 8.77 | 9.80 | 9.41 |
| August | 7.13 | 8.10 | 8.09 | 7.82 | 8.56 | 9.01 | 8.40 |
| September | 6.20 | 6.11 | 5.84 | 6.40 | 5.51 | 7.02 | 6.45 |
| October | 4.62 | 3.40 | 3.82 | 3.57 | 3.35 | 4.30 | 3.07 |
| November | 1.57 | 1.67 | 1.99 | 1.35 | 2.48 | 1.92 | |
| December | 0.85 | 1.33 | 1.06 | 1.31 | 1.15 | 1.32 | |
| January | 1.33 | 1.60 | 1.36 | 2.04 | 1.05 | 1.97 | |
| February | 1.54 | 1.78 | 2.22 | 1.54 | 2.15 | 1.61 | |
| March | 4.45 | 3.20 | 1.85 | 4.00 | 3.91 | 3.49 | |
| April | 5.49 | 4.25 | 3.17 | 4.49 | 5.26 | 5.22 | |
| May | 6.89 | 5.14 | 6.41 | 6.97 | 7.52 | 6.96 | |
| June | 7.99 | 6.76 | 7.26 | 7.93 | 9.19 | 7.33 | |
| Totals | 57.05 | 52.32 | 51.91 | 56.19 | 58.90 | 59.95 | |
| Average | 8.78 | 8.05 | 7.99 | 8.64 | 9.06 | 9.22 | |