



University of California Cooperative Extension Central Sierra News

Serving Amador, Calaveras, El Dorado & Tuolumne counties, May 2016

[Join Our Mailing List!](#)

In This Issue

Georgetown Elementary 1st graders planting vegetables while doing garden-enhanced nutrition education.

UCCE Central Sierra 4-H Dates of Interest

UCCE Master Food Preserver Classes

UCCE Master Gardener Classes

UC IPM Tidbits - New Plant Problem Diagnostic Tool

Conifer Mortality & Bark Beetles

Register Now for UCCE Foothill Grape Day 2016

Ag in the Classroom - the Best in Local Learning!

If You Use Manure on Your Farm Your input is important

California Rangeland Coalition 2016 Summit... Presentations available online

University of California Ranch to Rail Program Offered

2016 Shepherding School - Shearing & Wool Handling

2016 Quality Assurance & Ethics Training

Wool Classing School

Foothill Grape Day 2016

2016 Ranching for Profit with Dave Pratt

Greetings,

UCCE Central Sierra wants to keep you informed about what's happening! We host many workshops throughout the year, including free Master Gardener and Master Food Preserver classes open to the public. You will also find up-to-date 4-H news. Please read on for more information!

News & Updates

Conifer Mortality & Bark Beetles

Native bark beetles cause high levels of tree mortality in California. When, where and to what extent to which mortality occurs is primarily influenced by forest stand and drought conditions. A dramatic rise in the number of dead trees follows one to several years of inadequate precipitation. The more severe and prolonged the drought, the greater number of dead trees. Dense groups of trees are particularly susceptible to bark beetle attacks due to stress caused by competition for limited resources. Stressed trees equate to suitable host material for bark beetles and successful reproduction results in more beetles and higher levels of tree mortality.

Tree mortality caused by bark beetles can rise sharply in a short amount of time, similar to that observed in the southern part of the state in 2003. The primary reason for increases in tree mortality have been periods of severe and protracted drought combined with high tree densities. High levels of tree mortality will occur if forests are not altered to improve tree health and resilience. The

21st Annual UCCE Master Gardeners' Garden Tour

Lake Tahoe Basin Invasive Weeds Identification Workshop

Like us on Facebook 

 Forward to a Friend

Georgetown Elementary 1st graders planting vegetables while doing garden-enhanced nutrition education.



Monica Drazba, Nutrition Educator in El Dorado County's West Slope teaches garden-enhanced nutrition education in Georgetown Elementary. Drazba is currently using a simplified version of the Great Garden Detective curriculum. Monica is making a lasting difference in these students lives, this was the first time these students have planted vegetables in a school garden. The students eagerly planted lettuce, and arugula. Drazba stated that the students helped each other cover roots of the plants so they do not become dry. Monica gladly shared some of the students reactions while planting vegetables:

"I love planting vegetables!"

"Look at all the worms in the soil!"



bark beetles causing widespread mortality in the forests and forested communities in California are all native. The principal species include: mountain pine beetle, fir engraver beetle, western pine beetle, Jeffrey pine beetle and pine engraver beetles.

For more information on Bark Beetles and Conifer Mortality see the [Forest Health and Mortality website](#), or the [Ready for Wildfire website](#).

[What to do with dead and dying trees.](#)



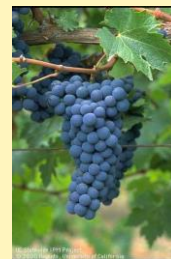
**Remove your dead trees.
Reduce your wildfire risk.**

Register Now for UCCE Foothill Grape Day, "Healthy Vines, Fine Wines."

Date: May 18, 7:30 am - Noon (with lunch to follow.)

Location: Amador County Fairgrounds

Foothill Grape Day is an annual grape grower and wine industry educational event sponsored and organized by the University of California Cooperative Extension Central Sierra Farm Advisor Lynn Wunderlich. All foothill growers and winemakers are invited to attend. This year's meeting theme is "Healthy Vines, Fine Wines" and will focus on current UC research on grapevine disease management



Lastly, the students decided as a class to share their vegetables with the school by putting it in the salad bar at their cafeteria.

Way to go Nutrition Educator
Monica Drazba!

[Subscribe to the UCCE
Central Sierra CalFresh
Monthly Nutrition
eNewsletter](#)

UCCE 4-H Events

UCCE
4-H Dates



[State 4-H Field Day -
May 28, 2016](#)

[State 4-H Fashion
Review - May 28, 2016](#)

[Enrollment Open](#) -
Open all year

[Amador](#)
5-9: [2016 Quality Assurance
& Ethics Awareness Training](#)
5-15: [New Volunteer
Orientation](#)
5-23 to 25: [4-H Animal
Science Symposium 2016](#)

[Calaveras](#)
5-9: [2016 Quality Assurance
& Ethics Awareness Training](#)
5-19 to 22: [Calaveras County
Fair](#)

and the effects of disease on wine grape composition and quality.

Red blotch virus is a newly described disease on grapes, and growers need to know how to identify it, how it is spread, and what they can do to manage it. Dr. Brian Bahder, a postdoctoral researcher at UC Davis, will present his latest research on red blotch virus insect vectors; and UC Enology Specialist Dr. Anita Oberholster will present her work on the effects of red blotch virus infected fruit on wine composition. Dr. Neil McRoberts will present his research on how grower management decisions can and do affect the spread of disease in vineyards. Red blotch is the hot topic in grapevine disease management right now, and we will cover it.

In addition, Dr. Doug Gubler, UC Plant Pathologist, will present highlights of his 33 years of research and extension outreach. Doug has contributed greatly to our knowledge of grape powdery mildew and canker disease. He's been at the forefront of understanding and controlling fungal disease in grapes for his entire career. Powdery mildew and canker are extremely common in vineyards, every grower has to deal with these problems. We are also very pleased that our new UC Cooperative Extension Viticulture Specialist, Dr. Kaan Kurtural, will make a Grape Day presentation on his research looking at how vineyard cultural manipulations can affect winegrape composition. This will be the first time foothill growers will have the chance to meet Kaan, who is sure to be a huge resource for the industry here.

To register for Foothill Grape Day, go to the [Foothill Grape Day 2016 webpage](#) or contact Robin Cleveland at (530) 621-5528.

Ag in the Classroom - the Best in Local Learning!

UCCE-Central Sierra has long supported El Dorado County Ag in the Classroom (AITC), a local, grassroots, non-profit organization that provides quality agriculture-related educational resources, programs, and training

[5-23 to 25: 4-H Animal Science Symposium 2016](#)

[El Dorado](#)

[4-H Camp Registration](#)

[5-9: 2016 Quality Assurance & Ethics Awareness Training](#)

[5-13: Fair Entry Forms due to EDC Fair Office](#)

[5-23 to 25: 4-H Animal Science Symposium 2016](#)

[6-1: 4-H Camp Fees due](#)

[6-10: El Dorado County Fair Buyers' Dinner](#)

[Tuolumne](#)

[Summer Camp Registration open.](#)

[5-7 & 8: Motherlode Roundup](#)

[5-9: 2016 Quality Assurance & Ethics Awareness Training](#)

[5-14: Tuolumne County 4-H Fashion Review](#)

[5-17: New Leader Orientation](#)

UCCE MFP Classes

Free Classes Offered by

[UCCE Master Food Preservers](#)



[Amador/Calaveras](#)

[5-14: Jams & Jellies & More](#) - Amador County

[El Dorado](#)

[5-11: Culinary Herbs & Spices: from garden to gourmet](#) - MFP/MG Class

opportunities. El Dorado County residents enjoy many benefits of diverse agricultural operations - farms, orchards, vineyards, timber lands, cattle ranches, olive groves, and many others - that fuel our economy, feed our families, and preserve our beautiful rural landscapes. AITC mission is to increase awareness and understanding of the importance of agriculture in our everyday lives. Ag in the Classroom provides resources and opportunities for youth to gain an appreciation and understanding of the role of agriculture. When students learn about soil, cultivation, food cycles, animals, nutrition, natural resources, and stewardship of the land, they can make informed decisions as consumers and community members as they grow up. AITC provides quality educational resources and programs that:

- Connect students to hands-on agricultural experiences;
- Help students make informed decisions about their food choices and health;
- Promote an understanding of the sustainable production of food, fiber, and shelter;
- Highlight the significance of our local food supply and agricultural heritage.

AITC has released six new videos for use in the classroom. Each was produced by a local professional videographer and cover a range of Ag topics --- from Bees and Blossoms to Water and Simple Machines to Apples! The videos are available for streaming at:

<http://agintheclass-edc.org/programs-resources/video-series/>

Important Input needed on Food Safety Modernization Act Produce Rule pertaining to Manure Use

If you use horse or other animal manure on your farm, you need to respond to this call for public input from the Food Drug Administration on the Food Safety Modernization Act Produce Rule. The Food and Drug Administration is requesting scientific data, information,

5-25: [Canning for Fun & Food: Intro to Canning & Food Safety](#)

UCCE MG Classes

Free Gardening Classes offered by



[UCCE Master Gardeners](#)

[Monthly Gardening Tips](#)

[Amador](#)

5-21: [Small Space Gardening](#)

6-4: [Edible & Poisonous Plants and Herbs](#)

[Calaveras](#)

5-14: [Kids' Day](#)

5-19 to 22: [Calaveras County Fair](#)

5-28: [Open Garden & Plant Sale](#)

[El Dorado](#)

5-11: [Culinary Herbs & Spices: From Garden to Gourmet - MFP/MG Class](#)

5-14: [Edible Landscapes](#)

5-14: [Saturdays with Barry](#)

5-21: [Designing with Perennials](#)

6-4: [Living with Oaks](#)

[Lake Tahoe](#)

5-31: [Strawberry Phenology Study](#)

and comments that would assist the Agency in its plan to develop a risk assessment for produce grown in fields or other growing areas amended with untreated biological soil amendments of animal origin (including raw manure). The risk assessment will evaluate and, if feasible, quantify the risk of human illness associated with consumption of produce grown in fields or other growing areas amended with untreated biological soil amendments of animal origin that are potentially contaminated with enteric pathogens, such as Escherichia coli O157:H7 or Salmonella. The risk assessment also will evaluate the impact of certain interventions, such as use of a time interval between application of the soil amendment and crop harvest, on the predicted risk. The risk assessment is intended to inform policy decisions with regard to produce safety.

If you don't explain your safe manure use, there is a good chance that those that are afraid of manure will convince the FDA that it is dangerous.

<https://www.federalregister.gov/articles/2016/03/04/2016-04712/risk-assessment-of-foodborne-illness-associated-with-pathogens-from-produce-grown-in-fields-amended>

Make sure to explain the role manure plays in your production and why you use it. Explain how you use it, how you compost or age it, and when you apply it. **Your input may directly affect future changes to the Food Safety Modernization Act Produce Rule.** Submit comments by May 3, 2016.

California Rangeland Coalition 2016 Summit Presentations available online.

The Summit addressed challenges and opportunities to improve rangeland management to reduce the incidence (scope and severity) of catastrophic wildfire. Two of the state's most devastating wildfires in history, the Valley and Butte Fire occurred in the past year and yet, the full impact of these fires to conservation interest and rancher sustainability is yet to be determined. Group discussions

6-4: [Tahoe Friendly Landscaping: Removing your lawn the easy way](#)

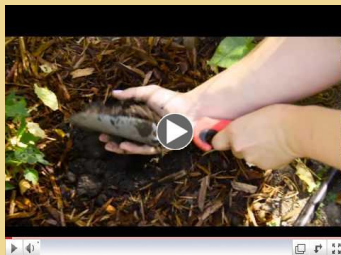
[Tuolumne](#)

5-7: [MG Class - Vegetable Gardening/Benefits of Mulching/Composting/Water Conservation for the Summer Ahead](#)

5-22: [21st Annual Master Gardeners' Garden Tour](#)

UC ANR Tidbits

UC IPM & more...



Importance of Mulch.

Check out this [NEW... Plant Problem Diagnostic Tool](#) to help you solve some of your pest problems.

UC IPM Website has a new [Seasonal Landscape IPM Checklist](#) to help landscape professionals use integrated pest management (IPM) to avoid and manage common pests of landscape trees, shrubs, and vines.

Use the [IPM Weather, models, & degree days webpage](#) to time insecticide applications.

during the summit considered lessons learned from recent fires and where we go from here.

[Watch the Presentation Videos!](#)



University of California Ranch to Rail Program Offered

Larry Forero, Jerry Johnson and Jim Oltjen

Overview of the Program

The UC Davis Animal Science Department, UC Cooperative Extension and California Beef Cattle Improvement Association Ranch-to-Rail seeks additional participants. This is designed to improve California beef cattle producers understanding of the feeding and carcass attributes of their cattle. To date ten ranches have sold over 100 head of cattle into this educational program. Each participating producer has received feedlot performance and carcass data associated with the cattle they sold. This data included average daily gain, feed intake (pen basis), cost of gain and carcass data.

Cattle Acquisition and Protocol

The UC Davis feedlot purchases 10-15 steers from cooperating producers. Interested producers will be scheduled several months in advance. The cattle participating in the program need to represent a producer's breeding program, be weaned a minimum of

Quick Links...

[Our Website](#)

[Events & Workshops](#)

[Archived Newsletters](#)

Join Our Mailing List!



Accessibility

Should you need assistance or require special accommodations for any of our educational programs, please contact us at 530-621-5502.



30 days, and have background and vaccination information available. The producers will deliver the cattle to the UC Davis Feedlot. Acquired steers will weigh between 700 and 900 lb. and will be Bos taurus. No Holsteins, Brahman-cross or Mexican type cattle will be considered. Producers will be asked to fill out a background information sheet including a vaccination history of the cattle. Cattle will be purchased based upon the current average price received for similar weight cattle. Upon arriving at the feedlot, cattle will be immediately weighed, and pay weight will be actual weight across the scale at delivery. The producer will receive the mid-price for the weight class of cattle sold that week. Price will be agreed prior to delivery. UC Davis retains the right of refusal to accept cattle that are unhealthy or do not meet specifications. On the day of delivery, participants will be given a tour of the Department of Animal Science Facilities on the Davis Campus (feedlot, processing plant, etc.).

If you are interested in participating in the program or want additional information, please contact any of the following individuals: Jerry Johnson at the UC Davis Feedlot (530-752-1200), Jim Oltjen (530-752-5650) Larry Forero at 530-224-4900.

[More information about the program.](#)

[Ranch to Rail Brochure](#)

Events & Workshops

2016 Shepherding School - Shearing and Wool Handling

Date: May 7, 2016

Time: All Day

Contact: Roger Ingram - (530) 889-7385

Location: Flying Mule Farm
11515 Joeger Road, Auburn, California 95602

At this hands-on, day-long workshop, students will learn about setting up a shearing site, contracting with a

shearer, handling sheep before, during and after shearing, and handling wool and preparing it for marketing. Participants will also learn the basics of shearing sheep.

[Register for the workshop.](#)

2016 Quality Assurance & Ethics Awareness Training

Date: May 9, 2016

Time: 6:00 - 8:00 pm

Contact: 916-263-3149

Sponsor: California State Fair

Location: [Amador County Fairgrounds, Spur Emporium Building](#)

[2016 Quality Assurance & Ethics Awareness Training Flyer](#)

Wool Classing School

Dates: May 11, 2016 - May 13, 2016

Time: All Day

Contact: JT Williams 707-463-4994

Sponsor: Mendocino County

Location: [Hopland Research and Extension Center](#)

See the [Wool Classing School webpage](#) for information.

Foothill Grape Day 2016

Date: May 18, 2016

Time: 7:30 am to Noon (lunch to follow)

Location: Amador County Fairgrounds

[Details and Registration Information.](#)



2016 Ranching for Profit with Dave Pratt

Date: May 19, 2016

Time: 9:00 AM - 4:00 PM

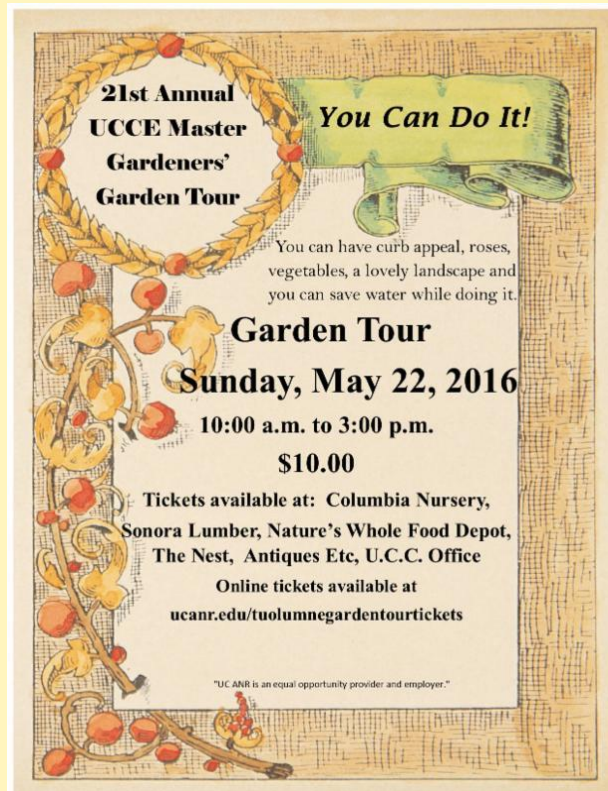
Contact: Julie Finzel 661-868-6219

Sponsor: Kern

Location: [UC Cooperative Extension - Tulare County](#)

[Details and Registration Information.](#)

UCCE Master Gardeners of Tuolumne County



Lake Tahoe Basin Invasive Weeds Identification Workshop

Lake Tahoe Basin Invasive Weeds Identification Workshop

Tuesday, June 14, 2016
1:00 p.m. – 4:00 p.m.

U.S.F.S. Lake Tahoe Basin Management Unit
Emerald Bay Conference Room
35 College Drive, South Lake Tahoe



- Learn about the **biology** and reproduction of invasive plants.
- Learn how to **prevent** the introduction and spread of invasive weeds.
- Regional experts will provide **hands-on identification** of thistles, knapweeds, toadflax species and other terrestrial weeds of concern in the Lake Tahoe area.

Who should attend?

Landowners and managers, on-the-ground crews, trail/park staff, volunteers and the general public

Register online for this workshop at: <http://ucanr.edu/laketahoweeweedcourse>
Questions? Contact Nancy Starr, at njstarr@ucanr.edu or call (530) 621-5503. This workshop is free but registration is required to ensure that we have space available for all registrants.

This workshop is hosted by the Lake Tahoe Basin Invasive Weeds Coordinating Group. Presenters include resource professionals from University of California Cooperative Extension – Central Sierra, El Dorado County Agriculture Department, US Forest Service – Lake Tahoe Basin Management Unit, Placer County Agriculture Department, California State Parks, and Nevada State Department of Agriculture.

Should you need assistance or require special accommodations for any of our educational programs, please contact us at 530-621-5502. The University of California working in cooperation with County Government and the United States Department of Agriculture.

It is the policy of the University of California (UC) and the UC Division of Agriculture & Natural Resources not to engage in discrimination against or harassment of any person in any of its programs or activities. Complete nondiscrimination policy statement can be found at <http://ucanr.edu/sites/ucanr/files/215244.pdf>. Inquiries regarding ANR's nondiscrimination policies may be directed to Julia L. Sims, Affirmative Action Compliance Officer/Title IX Officer, University of California, Agriculture and Natural Resources, 2801 Second Street, Davis, CA 95618, (530) 756-1397.

Click to download flyer.

Thank you for your continued interest in the UC Cooperative Extension Central Sierra's news, workshops, and events.

Sincerely,

Scott Oneto
University of California
Cooperative Extension
Central Sierra

The University of California working in cooperation with County Government and the United States Department of Agriculture.

It is the policy of the University of California (UC) and the UC Division of Agriculture & Natural Resources not to engage in discrimination against or harassment of any person in any of its programs or activities (Complete nondiscrimination policy statement can be found at <http://ucanr.edu/sites/anrstaff/files/215244.pdf>) Inquiries regarding ANR's nondiscrimination policies may be directed to John I. Sims, Affirmative Action Compliance Officer/Title IX Officer, University of California, Agriculture and Natural Resources, 2801 Second Street, Davis, CA 95618, (530) 750- 1397.

UC Cooperative Extension Central Sierra, 311 Fair Lane, Placerville, CA 95667

SafeUnsubscribe™_rkleveland@ucanr.edu

[Forward this email](#) | [Update Profile](#) | [About our service provider](#)

Sent by rkleveland@ucanr.edu in collaboration with



Try it free today